

# Apartment Schwanenwall

Schwanenwall 28, 1st floor, Dortmund

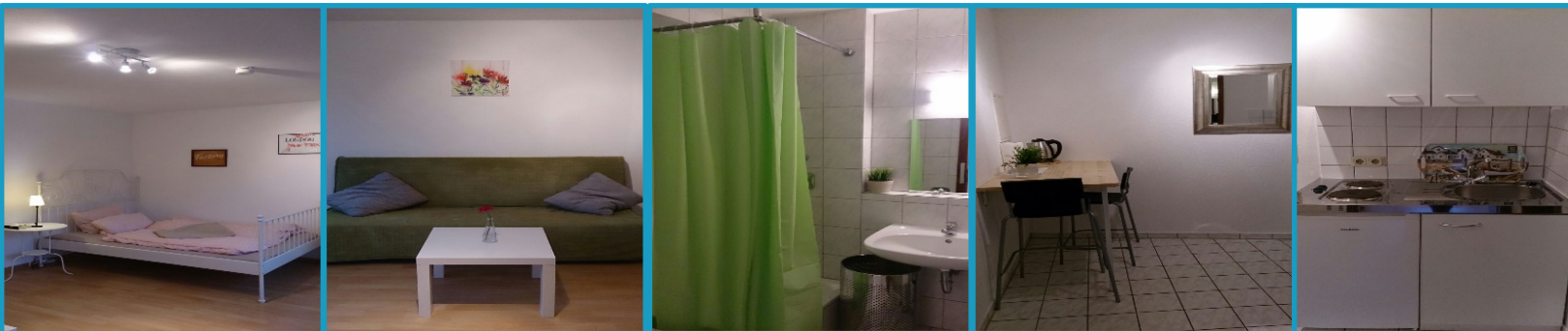
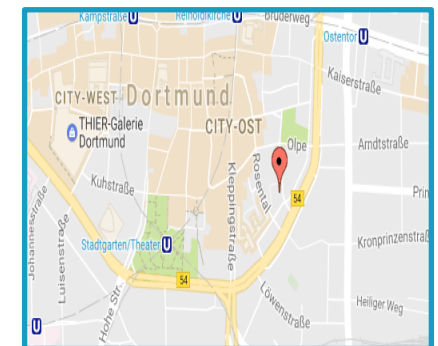


## Dortmund Flats

ZENTRALE LAGE | FLEXIBILITÄT | QUALITÄT

Fully furnished apartment  
for 2-4 persons:

- ✓ Central location
- ✓ Excellent inbound logistics (main train station)
- ✓ 25 m<sup>2</sup> in size
- ✓ Fully-equipped kitchen: Toaster, electric kettle
- ✓ Vacuum cleaner



Dortmund Flats | Ernst-Mehlich-Straße 2-4 | 44141 Dortmund  
+49 176 63 06 06 35 | [info@dortmundflats.de](mailto:info@dortmundflats.de) | [www.dortmundflats.de](http://www.dortmundflats.de)